

### የኢትዮጵያ ፌዴራላዊ ዲሞክራሲያዊ ሪፐብሊክ

ከጥቅምት 28/2004 ዓ.ም የነበረው የአየር ሁኔታ ጥቅምት 28/2004-ዓ.ም 1500 ላይ የነበረው የደመና ምስል



መግለጫ

- የብቁ ህግ
- ዝናብ
- ደመና
- ተዳ ህግ
- ክፍለ ደመና
- ልሳጥ



**ከጥቅምት 28, 2004 ዓ.ም የነበረው የአየር ሁኔታ**

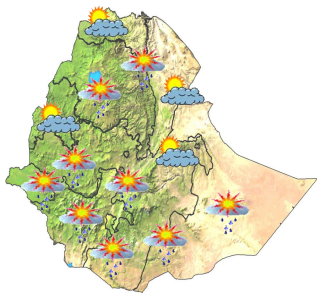
በትላንትናል ዕለት ለዝናብ መፈጠር መንስዔ የሆነ የአየር ሁኔታ ከስተቶች በአብዛኛው የሀገሪቱ አካባቢዎች ላይ ተጠናክረው ነበር የተስተዋለ። በመሆኑም ከምዕራብ የሀገሪቱ ዳርቻዎች፣ አብዛኛው ትግራይ፣ ከአፋር እና ሰሜን ሱማሌ በስተቀር አብዛኛው የሀገሪቱ አካባቢዎች የተሻለ የዝናብ ስርዓት ነበራቸው። በአጠቃላይ ምዕራብ-መካከለኛው እና ደቡብ አርጫ፣ አብዛኛው የደቡብ ብሄር ብሄረሰቦችናህዝቦች ክልል እና ሱማሌ ተቂት የደቡብ ትግራይ፣ መካከለኛው እና ምስራቅ አግራ አካባቢዎች ከተላል እስከ መካከለኛ መጠን ያለው ዝናብ አግኝተዋል። በተጨማሪም በአጠቃላይ 57.2 እና በማጀቱ 32.1 በሚ.ሜ.የሆነ ከባድ ዝናብ ተመዝግቧል።

ክልል	የጣቢያው ስም	ዝናብ በሚ.ሜ	የሙቀት መጠን በዲ.ሴ		ክልል	የጣቢያው ስም	ዝናብ በሚ.ሜ	የሙቀት መጠን በዲ.ሴ	
			ከ	ዝ				ከ	ዝ
ትግራይ	አዲግራት	0.0	24.0	5.1	አርጫ	ከላምሳ	0.0	24.0	11.0
	ሁመራ	0.0	38.0	18.0		ዉራ	27.0	25.0	12.8
	መቀሌ	0.0	22.6	12.5		ጎምቦ	-	-	-
	አድዋ	0.0	28.0	9.5		አርሲ ርቤ	6.5	23.0	12.0
13.0 አማራ	ባህር ዳር	6.3	26.7	12.5		ካቼስ	18.2	20.0	10.5
	አለምኮተማ	0.0	25.0	12.8		ወሊሶ	0.0	27.0	15.2
	ናንዓላ	0	25.5	8.0		ነቀምት	4.0	25.7	13.5
	ኮምቦልቻ	17.8	26.0	13.0		ነጆ	0.0	27.0	9.8
	ደባርቅ	0.0	19.5	6.5		ጎራ	6.8	24.2	13.0
	*ደብረ ብርሃን	-	-	-		አይራ	0.0	29.5	15.3
	ደ/ማርቆስ	2.0	22.0	10.5		ደብረዘይት	0.7	28.2	16.2
	ጎንደር	7.4	27.0	11.4		ጊምቤ	0.0	26.5	12.5
	*ደላገበያ	-	-	-		አዳማ	19.1	28.5	15.5
ደቡብ ህዝ	*ማጂ	-	-	-	ጃማ	8.4	27.6	15.2	
	አዋሳ	19.7	28.8	16.0	ድራዳዋ	0.0	32.0	19.6	
ቤን-ጉሙ	*ማሻ	-	-	-	ጋምቤላ	10.5	33.5	22.5	
	*እሳሳ	-	-	-	ሰማሌ	*ጆጆጋ	-	-	-
24.2 አ.13.0 ፋር	ማንኩሽ	0.0	34.8	17.0	ሐረሪ	ሐረሪ	0.0	26.5	13.0
	*ሰመራ	-	-	-	አ.አ	አ.አ(ቦሌ)	ካፊያ	24.0	13.0

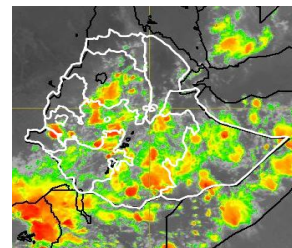
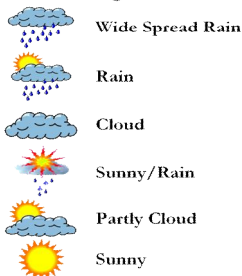
\*መረጃ የለውም-

**ጥቅምት 30, 2004 ዓ.ም የሚጠበቀው የአየር ሁኔታ**

በነገላ ዕለት ዝናብ ሰዩ የሆነ የአየር ሁኔታ ከስተቶች በደቡብ ምዕራብ፣ በደቡብ እና ደቡብ ምስራቅ የሀገሪቱ አካባቢዎች ላይ በተመሳሳይ ተንካፊ እንደሚቀጥሉ ይጠበቃል። በተጨማሪም ወደ ምስራቅ የሀገሪቱ አካባቢዎች ላይ ይበልጥ እንደሚስፋቱ የትንበያ መረጃዎቻችን ይጠቁማሉ። ከዚህም ጋር ተያይዞ የደቡብ ብሄር ብሄረሰቦችናህዝቦች ክልል፣ ሱማሌ፣ ሀረሪ፣ ጋምቤላ እና አብዛኛው የአርጫ አካባቢዎች በአንዳንድ ቦታዎቻቸው ላይ ዝናብ ያገኛሉ። በተጨማሪም ትግራይ እና አግራ በተቂት ቦታዎቻቸው ላይ ዝናብ እንደሚያገኙ ይጠበቃል። በሌላ በኩል የተቀናጠ የሀገሪቱ አካባቢዎች ክፍለ ደመናማ የአየር ሁኔታ አመዘናባኛ ይደላሉ።



Legend:



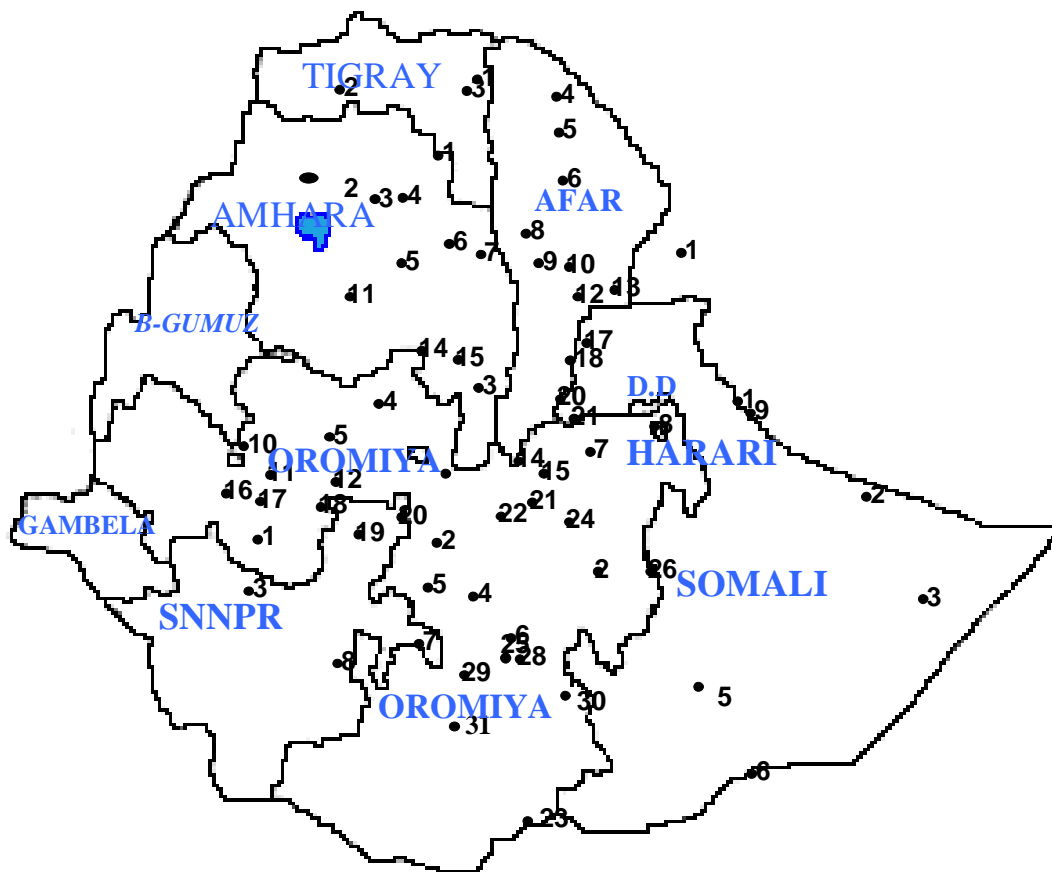
**Weather summary for November 08, 2011**

The rain producing system was re-organized over most parts of the country. Hence, with exception of western border of Ethiopia, much of Tigray, Afar and northern Somli, the remaining most parts of the nation had better rainfall distribution. In general, western, central and southern Oromiya, much of SNNPR and Somali, a few places of southern Tigray, central and eastern Amhara received light to moderate rainshowers. In addition, heavy fall of 57.2 and 32.1mm was recorded at places of Abomsa and Majete respectively.

Region	Station		Rainfall (mm)	Temperature (°C)		Region	Station		Rainfall (mm)	Temperature (°C)	
	Name	code		Max	Min		Name	code		Max	Min
TIGRAY	Adigrat	-	0.0	24.0	5.1	OROMIYA	A/Robe	9	6.5	23.0	12.0
	Adwa	-	0.0	28.0	9.5		Abomsa	-	57.2	27.0	15.5
	*Aider	-	-	-	-		*Addele	14	-	-	-
	*Axum	4	-	-	-		Aira	-	0.0	29.5	15.3
	Chercher	-	0.0	24.0	15.5		*Alemaya	3	-	-	-
	*Frewoini	-	-	-	-		*Alge	-	-	-	-
	Humera	-	0.0	38.0	18.0		*Ambo	19	-	-	-
	Maichew	2	0.3	20.5	12.0		Arjo	-	1.6	21.8	12.8
	Mekele	-	0.0	22.6	12.5		Ayisha	-	0.0	32.5	23.0
	*Mytsemiry	-	-	-	-		Bedelle	-	17.0	26.0	13.0
*Nebelet	-	-	-	-	Begi	-	0.0	27.2	12.5		
*Shire	-	-	-	-	Chira	21	27.0	25.0	12.8		
AMHARA	A/Ketema	5	0.0	25.0	12.8	*D/Dolo	7	-	-	-	
	*Ayehu	-	-	-	-	*Dolomena	-	-	-	-	
	Aykel	13	0.0	24.0	12.4	D/Zeit	15	0.7	26.0	12.5	
	Bahir Dar	14	6.3	26.7	12.5	Ejaji	-	3.2	28.2	16.2	
	Bati	4	0.6	27.0	14.2	Fiche	30	8.7	20.5	8.2	
	Chagni	-	0.0	28.6	12.5	*Gelemso	1	-	-	-	
	*Cheffa	10	-	-	-	Gimbi	-	0.0	26.5	12.5	
	Combolcha	17	17.8	26.0	13.0	Ginnir	-	0.9	21.5	13.0	
	*D/Birhan	21	-	-	-	Gore	-	6.8	24.2	13.0	
	D/Markos	-	2.0	22.0	10.5	*H/Mariam	4	-	-	-	
	*D/Tabor	2	-	-	-	Jimma	13	8.4	27.6	15.2	
	*D/Work	-	-	-	-	*K/Mengist	25	-	-	-	
	Dangila	20	0.0	25.5	8.0	Kachise	22	18.2	20.0	10.5	
	Debark	-	0.0	19.5	6.5	Koffele	24	2.6	19.6	4.0	
	Gondar	8	7.4	27.0	11.4	Kulumsa	8	0.0	24.0	11.0	
	*Lalibela	-	-	-	-	Limugenet	11	7.3	26.5	15.0	
	M/Meda	9	0.0	18.5	8.0	*Meiso	-	-	-	-	
	M/Selam	-	0.5	20.3	11.0	Metehara	-	2.1	34.0	21.0	
	Majete	-	32.1	27.0	15.5	Nazereth	-	19.1	28.5	15.5	
	Motta	-	0.0	22.0	9.5	Neghelle	-	19.9	23.3	17.3	
*S/robit	-	-	-	-	Nejo	-	0.0	27.0	9.8		
*Sh/Gebeya	-	-	-	-	Nekemte	27	4.0	25.7	13.5		
*Sirinka	-	-	-	-	*Nura era	-	-	-	-		
Wegeltena	-	0.0	18.5	7.0	Robe	-	1.6	21.4	11.7		
Wereilu	-	0.0	21.5	11.5	*Sekoru	-	-	-	-		
SNNPR	A/ Minch	7	5.1	29.5	18.8	*Shambu	26	-	-	-	
	Hawassa	4	19.7	28.8	16.0	Weliso	-	0.0	27.0	15.2	
	*Bilate	2	-	-	-	*Ziway	-	-	-	-	
	Bui	-	20.0	25.0	12.0	Harari	Harar	-	0.0	26.5	13.0
	*Dilla	-	-	-	-	AFAR	A/Arba	-	0.0	35.0	21.5
	Hossaina	-	0.0	24.5	12.0	*Assaita	-	-	-	-	
	Jinka	-	20.8	24.5	17.0	*Dubti	-	-	-	-	
	Konso	8	1.8	27.5	16.5	*Gewane	-	-	-	-	
	*Maji	-	-	-	-	*Mille	-	-	-	-	
	M/Abaya	-	20.5	29.4	19.0	*Semera	-	-	-	-	
Sawla	-	17.2	29.0	15.5							
*werabe	-	-	-	-							
SOMALI	Gode	3	1.2	31.6	23.5						
*Jijiga	1	-	-	-							
BE/GUMUZ	*Assosa	1	-	-	-	GM	Gambella	1	10.5	33.5	22.5
	Mankush	-	0.0	34.8	17.0		Lare	-	0.0	32.5	22.3
	Pawe	-	0.0	30.5	14.0	DD	D/Dawa	-	0.0	32.0	19.6
	S/Abaya	-	0.0	33.0	14.2	AA	A(Bole)	-	Tr.	24.0	13.0
						*A.A(Obs)	-	-	-	-	

\*No data

Tr. = Rainfall amount less than 0.1 mm



### **Weather forecast for November 10, 2011**

The rain bearing systems are expected to persist in similar strength across southwestern, southern and southeastern portions of the country and further expanded eastwards of Ethiopia. In line with this, SNNPR, Somali, Harari, Gambela and much of Oromiya will have isolated to scattered rainshowns. Moreover, Tigray, and Amhara will have isolated rainshowers. On the other hand, the remaining parts of the nation will have patches clouds.